

2. ♖e1 ♜d3 3. ♖e2 ♜e3+ 4. ♖d2
 ♜e5 5. ♜e4 ♜g5 6. ♜g4.

№4

1. ♜d5 h3 2. ♞f4 h2 3. ♞h5 h1 ♞
 (♞) stalemate.

№5

The progressive movement of the white queen is extremely instructive – first ‘zigzag’, and then ‘step-wise’.

6. ♞c8! ♜f8 7. ♞d7! ♞g7. If the bishop withdraws, then 8. ♞e8+ and 9. ♞f7+ is decisive, while if 7... ♞f6+ - 8 ♖xf6 h1 ♞ 9. ♖g6 ♞b1+ 10. d3! ♜e7 11. ♞xe7 ♞xd3+ 12. ♖xh6 ♞e3+ 13. ♞g5+. 8. ♞xg7 ♜xg7 9. e7 h1 ♞ 10. e8 ♞ ♜f8 11. ♞e6 ♖h8 12. ♞e5 ♖g8 13. ♞d5 ♖h8 14. ♞d4 ♖g8 15. ♞c4 ♖h8 16. ♞c3 ♖g8 17. ♞b3 ♖h8 18. ♞b2 ♖g8 19. ♞b7! The queen moves onto the 7th rank, keeping the b1-square under attack. 19... ♞f5 20. ♞f7 ♖h8 21. ♞xf8#.

Lesson 37

№1

33... b3 34. ♜d5 (34. a3 ♜f6—+) 34... ♜f6 35. ♜a5 (the capture on a2 and c4-c3 was threatened) 35... c3 36. bc ♜xc3 37. ♜xa6 b2 38. ♜xb2 ♜xb2 with a technically won position.

№2

19... b5!? 20. a3 ♞d6 followed by ♞fc8 and the preparation of b4.

№3

Before advancing his queenside pawns, Black improves the placing of his pieces: by attacking the e5-pawn he ties the white pieces to its defence, then he centralises his king.

32... ♜d8! 33. ♜d2 ♜c7 34. ♜c3 ♖f8 35. ♖e1 (♖ 35. ♖e2) 35... ♖e7 36. ♜e4 ♞dc5 37. ♜b4 ♖d7 38. ♜c2 ♖c6 39. ♖d2 ♖d5 40. ♖e3 ♜b6 (40... ♜xe5 41. ♞xe5 ♖xe5+) 41. ♜xc5 ♜xc5+ 42. ♖e2 ♜d4—+ (the rest is a matter of technique) 43. b3 ♞f4+ 44. ♖f1 ♜xe5 45. bc+ bc 46. g3 ♞e6 47. ♖e2 ♜d6 48. a4 a5 49. ♜d1 ♜c5 50. ♜c2 ♜e7 51. ♜d1 ♞c5 52. ♞d2 ♞d3 53. f4 ♞c1+ 54. ♖f3 ♖d4 55. ♞f1 ♞d3! (55... ♖d3!? 56. ♞e3 ♜c5 57. ♜c2+ ♖d2 58. ♞xc4+ ♖xc2 59. ♞xa5 ♖d3) 56. ♞e3 ♞b4 57. ♞g4 f6 58. ♖e2 ♜d8 59. ♞e3 ♖c3. White resigned.

Lesson 38

№1

The position favours White, since his pawns are more mobile.

18. h3! (18. e5?! c5! 19. ef cd+; 18. ♜xf6?! ♜xf6 19. e5 ♜xg2) 18... c5 [18... ♞xe4 19. ♜xe4! (19. hg? ♞xc3!—+) 19... ♜xe4 20. hg] 19. ♜xf6 ♞xf6 20. e5, and the position has become clear.

№2

21. e5! de (forced, since Black to reckon with ♞d2-e4, as well as e5-e6) 22. ♞de4 (threatening ♞e4-c5)

22...♖f5 23.♖f2, and there is no defence against the threats of ♖d6 or ♖b6.

№3

18.e5! ♖fe8?! [18...de 19.fe ♖xe5 20.♖c4 ♖h5 (20...♖d4? 21.♖f4 ♖g4 22.♖f1!+-) 21.♖xh5 ♖xh5 22.♖b6 ♖d8 23.♖g5 f6 24.♖e3!]

19.e6! fe 20.de ♖xe6 21.f5!→.

Lesson 39

№1

18...f5! Now White does best to play 19.♖a4!, attacking the a7-pawn and hindering Black's battle for the d-file.

19...a6 20.♖c4 ♖ad8 21.♖xe6+ ♖xe6 22.♖b3 ♖xb3 23.♖xb3. Draw

№2

13.a4! with the idea of a minor-ity attack. For example, 13...♖b7 14.♖fe1 ♖c8 15.♖d3, and Black has to take measures against the a4-a5 breakthrough.

№3

24...b5! 25.c5! (25.♖xd7 ♖xd7 26.cb ♖xb5 27.♖c1 ♖b6 28.♖c3 ♖a6± Adams) 25...b4 26.ab ♖b8 27.♖d3!?

(27.♖a3? ♖b7±; 27.♖xd7 ♖xd7±; 27.♖c1 ♖xb4 28.♖c3 ♖bd4± Adams) 27...♖xd3 28.♖xd3 ♖xb4 29.♖c1 (29.♖hd1? ♖xd3 30.♖xd3 ♖d7 31.♖c3 ♖b5

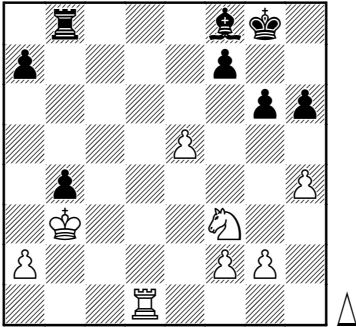
32.c6 ♖b8±) 29...a5!? 30.c6 ♖xd3 31.♖xd3 a4 32.♖c3 ab 33.♖a6∞.

№4

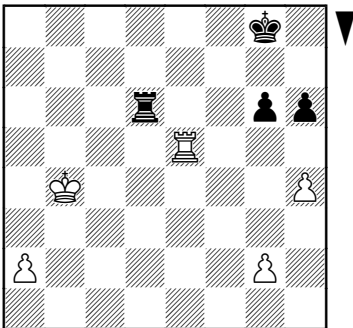
With the rook — activity is more important than the pawn structure! After the approximate 27...♖xb4 28.♖d8 ♖f8 29.e6 fxe6 30.♖e5 ♖g7 31.g3 ♖a4 32.♖b3 ♖b4 33.♖c3 ♖a4 the two sides' chances are equal.

In the game there followed 27...cxb4?! Black's pawn majority on the queenside is an illusion. The pawns are easily blockaded, and in addition Black's main forces are diverted to their defence.

28.♖b3 ♖f8? Mistakes occur in pairs, and it would seem that this second one is already decisive. By trying to free his rook from the defence of the b-pawn, Black removes the attack on the e5-pawn and allows White to activate his knight. Better was 28...♖c8! 29.♖xb4 ♖c2 30.♖d2 ♖xd2 31.♖xd2 ♖xe5 — White's king is much more active than its opponent, but the strong bishop should guarantee Black a draw. The game could have continued as follows: 32.♖b3 ♖f8 33.♖b5 ♖f6 34.g3 ♖e7 35.♖a6 ♖c3 36.♖c1 ♖d4 37.f3 ♖f2, and if anyone is playing for a win, it is Black.



29. ♖d7 a5. Or 29... ♙c5 30. ♘d4 ♙f8 31. e6 ♙xd4 32. ♖xd4 fxe6 33. ♖g4 ♙f7 34. ♖xb4 ♖d8 35. ♖b7 ♙f6 36. ♖xa7 ♖d2 37. ♖a8!+-.
 30. ♘d2 ♖c8 31. ♘e4 ♙g7 32. ♖d5 ♖e8 33. f4 f6 34. ♘d6 ♖d8 35. ♖xa5 fxe5 36. fxe5 ♙xe5 37. ♖xe5 ♖xd6 38. ♙xb4+-. The a-pawn cannot be stopped.



There followed: 38... ♖d2 (38... ♖d4 39. ♙b5 ♖xh4 40. a4) 39. a4 ♖xg2 40. a5 ♖a2 41. ♙b5 ♙f7 42. a6 ♙f6 43. ♖e4 g5 44. ♖a4 ♖b2 45. ♙a5 ♖b8 46. h5!, and White soon won.

Lesson 40

№1

Black should transfer his king to c8, play ♙xc2 and after ♖xc2 – ♖a3. The base of the pawn chain – the c3-pawn – is then lost.

№2

29. c6! ♙c8 (29...bc 30.dc!?)
 30. ♘b4 ♙e8 (30...b6 31. ♘a6 ♙xa6 32.ba △ ♘b5) 31. cb ♙xb7 32. ♘c6±.

№3

By sacrificing his b-pawn Black has created serious threats to the white king. It should be mentioned that the knight on b5 is a headache for White, since it is badly placed. But first of all the counterplay on the kingside should be suppressed, and therefore:

14... f5! (14... ♙a6 15. ♘d6 ♙xd6 16.ed ♖b6 17. ♙d2!) 15. ♖f2 (15.ef ♘xf6±; 15. ♙d2 a6 16. ♘d6 ♙xd6 17.ed ♖xb2 18. ♖b1 ♖xb1 19. ♖xb1 ♖a5! △ ♘f6-e4+-; 15. ♖e1 ♖b6→ Rustemov) 15... ♖a5, (15... ♖b6!?) 16. ♘d6 ♙a6! (△ ♖b2) 17. ♖e1 (17.g4 ♖xb2!) 17... ♙xd6 18.ed ♘f6 19. ♙f3 [19. ♘a2 ♖b6 20. ♘b4 c3! 21.bc (21. ♙xa6 ♘xb4 22.ab cb+ 23. ♙xb2 ♖xa6) 21... ♙xe2 22. ♖xe2 ♘e4→ Rustemov] 19... ♖b6. White resigned.

Lesson 41

№1

Yes - 17. c5!, and if now 17... dc, then 18. ♙xa6 cb (18...ba

19. ♖xc5) **19. ♖c4!** with the threat of d5-d6.

№2

35. ♖h5 ♖g8 36. ♖h6 ♖e8 37. ♖f2 ♖f8 38. ♖d3 (freeing the queen) **38... ♖xa4** (38...gh 39. ♖f7+-; 38... ♖h8 39. ♖xg7+-) **39. ♖e3 ♖d1 40. ♖xg7! ♖xg7 41. ♖xg7+-.**

№3

14.c5!? cd (14...h6 15.cd! ♖xd6 16. ♖e6 ♖xe6 17.de±; 14...f4 15. ♖f2 ♖xd5 16.ed ♖xg5 17.dc bc 18. ♖e4 ♖d8 19.cd±; 14...dc 15.dc! ♖xd1 16. ♖axd1 cb 17. ♖c4+±) **15.ed! e4 16.cd! ♖xd6** (16...♖xd6 17. ♖b5±; 16...♖xc3 17.de ♖xe7 18.d6 ♖g7 19. fe fe 20. ♖c4+ ♖h8 21. ♖xe4 ♖xa1 22. ♖xa1 ♖xa1 23. ♖xa1±) **17. ♖d4±.**

Lesson 42

№1

30. ♖e4 deserves attention, then g3-g4, f2-f4 with the idea of f4-f5 or g4-g5.

№2

13.b4!? The main idea is to play a2-a4, b4-b5 and a4-a5. After the exchange on c6 an invasion on d5 is possible. Black must also reckon with the creation of an outpost on d6 by c4-c5.

№3

As Anand pointed out in his notes to this game, **19.f6!** should have

been played, for example: **19...g6** [19...gf? 20. ♖g4+ ♖h8 21. ♖g3+-; 19...♖xa4 20. ♖f4 ♖d8 (20... ♖c3+ 21. ♖xc3! bc 22. ♖g5 ♖xb2+ 23. ♖a1! ♖xa2+ 24. ♖xa2+-) 21. ♖g3 ♖f8 (21...♖c3+ 22. ♖a1) 22. ♖xg7 ♖c3+ 23. ♖a1 ♖e8 24. ♖xh7! ♖xd1 (24...♖c5 25. ♖g3 ♖f8 26.bc+-) 25. ♖g3+-] **20. ♖f4 ♖h8 21. ♖xb6 ♖xb6 22.h5±.**

Lesson 43

№1

34.e5! (otherwise ♖d7-e5 with compensation for the exchange) **34...♖xe5** (34...de 35. ♖d4) **35. ♖f4** with active positions for the pieces and a material advantage.

№2

After **11. ♖f4? ♖a4!** it is difficult for White to bring his queen and rook into play. 11.a4 is correct.

№3

At first sight Black's defences are very solid, and his 'saw' resists the desire to come into contact with them. But there is a splendid tactical solution: **17.d5! ♖d8** (17...cd? 18. ♖xd5+-; 17...ed 18. ♖xd5 ♖d6 19. ♖xf6+ ♖xf6 20. ♖h7#) **18. ♖fe1** (a technical solution to the position was also possible: 18.de fe 19. ♖e4 g6 20. ♖g3 etc.) **18...♖h8 19.de ♖xd1 20. ♖xd1 fe 21. ♖e4 g6 22. ♖c5 ♖xc5** (22...♖c8 23. ♖xg6+ ♖xg6 24. ♖xg6 ♖xc5 25. ♖xh6+ ♖g8 26. ♖g5+-)

23. ♖xc5 ♜g8 24. ♖a2 ♔g7 (24... ♖f7 25. ♖d6; 24... ♖d5 25. ♖xd5 ed 26. ♜xd5) 25. ♖xe6 ♜f8 26. ♖d7! Black resigned.

Lesson 44

№1

13... ♖h4 (dangerous is 13... ♖d6 14.e5 ♖dxc4 15. ♖h5 g6 16. ♖h6 with the threat of ♖h5) 14.0-0 ♖d6 and now f7-f5.

№2

1...b5! 2.cb ab 3. ♖xb5 ♜fb8 4. ♖d3 ♖a5 5.0-0 ♖c6 with a blockade of White's queenside.

№3

After 24. ♖d5!± White deprives Black of the counterplay associated with d6-d5.

Lesson 45

№1

25.e4! ♖g6 (after 25...de 26. ♖xe4 ♖xe4 27. ♖xe4 ♖d5 28. ♜d2 Black has great problems) 26.f4 f6 27. ♖h3 ♜cb8 (worse is 27... ♜e8 28. ♖e6+ ♖f7 29. ♖xf7+ ♔xf7 30. ♖b7) 28.e5, creating a dangerous passed pawn.

№2

34. ♖d3 ♖e8 35. ♖f4 (now ♖f4-e6-d4 is threatened, as well as ♜c6 followed by ♖g6) 35... ♔f7 36. ♜xc6! ♖xc6 37. ♜xc6, and af-

ter the knight moves White plays 38. ♖e6+, winning material.

№3

13... ♖xf3! A strategic solution to the position (establishing control over c4 and d5) supported tactically (by sacrificing the exchange Black lures the white queen into a 'cage').

14. ♖xf3 (14.gf?) 14... ♖xc4 15. ♖xa8 ♖c6 16. ♖b7 ♖d5 17. ♜e1 ♜b8 18. ♖d7 ♜d8 19. ♖b7 h5 (19... a6!? ♖ ♔g8-f8-e8, ♜b8) 20. ♖c1 ♖a5 21. ♖xa7 ♖c6 22. ♖a6 ♖c4 23. ♜b1 ♖c7. White resigned.

Lesson 46

№1

18. ♖h3! creates dangerous threats on the kingside, and 18... ♜xc3 does not work because of 19.f3!, for example, 19...h6 20. ♖xf6 ♖xf6 21. ♖e4 ♖xe4 22. ♜xe4 ♖xe4 23. ♖d7 ♖c2 24. ♖xf6+ gf 25. ♜c1, and the white queen is stronger than rook, bishop and pawn.

№2

22...b4 loses in view of the combination 23. ♖h6+ ♔f8 24. ♜xg7! ♔xg7 25. ♖g4+ ♖g5 26.c4! ♖xd4 27. ♖xg5+ ♔f8 28. ♖g8+ ♔e7 29. ♖xf7+ ♔d6 30. ♖f4+ ♖e5 31. ♖g4. 22...g6 was necessary, when the position should be assessed in Black's favour.

№3

13...♔d6 14.♖c1 c5 (Black decides to change the c6+d5 pawn pair into hanging pawns) 15.♗d3 ♔b7 16.♖fd1 ♗e7 17.♗d2 (17.♗a4 ♗e4 18.♗b6 ♖ad8 19.♗xd5? ♔xd5 20.♗xd5 ♗x-f2!-+) 17...♖ad8 18.♗a4 d4! 19.♗c4 (19.ed ♗h5→) 19...♗e4 (19...de!?) 20.ed ♗xf2! 21.♖xf2 ♗g5 22.d5 [22.g3 ♔e4 23.♗xd6 (23.♗e3 ♗f5+ 24.♖g1 ♗xh3-+) 23...♖xd6 24.♖e1 ♖f6+ 25.♖g1 ♖f1+!!-+ Berelovich] 22...♔xd5 23.g3 ♔xg3+! 24.♗xg3 ♖e2+! 25.♖xe2 ♗xg3 26.♗e5 ♗g2+ 27.♖e1 (27.♖e3 ♗e4+ 28.♖f2 ♖d6 -+) 27...f6 -+.

Lesson 47

№1

26.e4! de 27.♖d6 ef (after 27...♗e8 28.♗xe4 a pawn is lost) 28.♖xc6 ♖5xc6 29.♗xf3 ♖c1 30.♖xc1 ♖xc1+ 31.♖h2±.

№2

As was pointed out by Botvinnik, White should have continued 28.♔xf6 (in the game 28.f4? was played) 28...gf 29.f4 ♖h5 30.c4 ♔xb4 31.♗xd5 ♔d6 32.♗xf6 ♖hh8 (32...♖f5 33.♗d5) 33.♗e4, followed by the exchange on d8 and the advance of the king.

№3

25.♗f4!? ♖cd7 26.♖d2 ♔f5 27.♔xf6 ♔xf6 (27...♔e4 28.♔xe7 ♔xf3 29.♔xd8+-) 28.♗cxd5±.

Lesson 48

№1

26...♗f4! 27.♖c2 (27.♗xf4? ♗xf4 28.♖ec2 ♗e2+) 27...♗xd2 28.♖exd2 ♖xc2 29.♖xc2 ♗b4 and 30...♖c8.

№2

19.♗f5! ♗c6. Other continuations are worse: 19...♗xf5 20.♗xf5 ♔c5+ 21.♖h1 ♔g6 22.♗a4! winning material; 19...♗c7 20.♗cb5 ♗b8 21.♗e6; 19...♔d6 20.♗cb5 ♔b8 21.♗xd7 ♗exd7 (21...♖xd7 22.♖c1) 22.♗f5 ♗e5 23.♖c1.

20.♗xd7 ♖xd7 21.♗xc6! bc 22.♗a4, and 22...c5 is bad in view of 23.♔xf6 gf 24.g4 (24.♔h3 ♖dd8 25.♖c1) 24...♔g6 25.f4.

№3

35.♗xc5 ♗xc5 36.♗xd5! ♔xd5 37.♗xc5 bc 38.♔xd5.

Lesson 49

№1

21.d5! ♗d8 (defending the e6-pawn) 22.d6 ♖c5 23.d7 ♖e7 (23...♖f8 was better) 24.♗f4 ♔g7? (24...♔xf3!?) 25.♗b8 ♗xh6 26.♗xd8+-.

№2

After 15...d4 Black does not succeed in developing pressure on the c2-pawn. Correct is 15...♗f6 16.♔e3 ♗xb2 17.♗xd5 ♔xe3

18. ♖xe3 b6 19. c4 ♜f4 and 20... ♜e6. In this case it is White who has to fight for equality.

16. ♙d2 ♖f6 17. ♗e4, and the d4-pawn needs defending.

Nº3

15. d5! ♙xd5 16. ♜xd5 ed [16... ♜xd5 17. ♗xd5! ed (17... ♖xd5 18. ♙xe7 ♗xe7 19. ♖h4+-) 18. ♙xh7+ ♖xh7 19. ♖h4+ ♖g8 20. ♙xe7 ♖xe7 21. ♜g5 ♖xg5 22. ♖xg5±] 17. ♖h4 with a strong attack.

Nº4

23. d5! ♞xe4 (23... ♜xd5 24. ♙xd5 ♙xd5 25. ♗xd5! ♖xd5 26. ♜f6 ♙xf6 27. ♖xf6; 23... exd5 24. ♜xf6 ♙xf6 25. ♖xf6) 24. dxe6 f5 25. ♗xd8 ♗xd8 26. ♗d1. Black resigned.

Lesson 50

Nº1

18. ♜xf7! ♗xf7 (18... ♖xf7 19. ♖xe6+ ♖g6 20. h4) 19. ♖xe6 ♖f8 (19... ♜ed5 20. ♜xd5 ♜xd5 21. ♙xd5 ♙xd5 22. ♗xc8+-) 20. ♜e4 ♗xc1 21. ♗xc1 ♜fd5 22. ♜d6 ♙a8 23. ♗e1! g6 24. ♜xf7 ♖xf7 25. ♖xe7. Black resigned.

Nº2

20. f5 ♜xf5 21. ♜xf7! ♗xf7 (21... ♜xd4 22. ♗xd4! ♗xd4 23. ♖xe6+-)

22. ♖xe6 ♜ed6, and here White could have won by 23. ♖e5!, for example: 23... ♖xe5 (23... b6 24. ♖xa5 ba 25. ♙xf7+ ♖xf7 26. g4+-) 24. de ♜e3 25. ♗xd6! ♗xd6 26. ed ♜xf1 27. d7!+-.

Nº3

15. ♙xe6! fe? (15... ♗c7!) 16. ♖xe6+ ♖h8 17. ♖xe7 ♙xf3 18. gf ♖xd4 19. ♜b5 ♖xb2 (19... ♖f4 20. ♗xc8 ♗xc8 21. ♜d6 ♖xf3 22. ♜xc8 ♖g4+ 23. ♖f1 ♖h3+ 24. ♖e2 ♖xc8 25. ♖d2±, Hazai – Danielsen, Valby 1994) 20. ♗xc8 ♗xc8 21. ♜d6 ♗b8 22. ♜f7+ ♖g8 23. ♖e6 ♗f8? (23... h5 24. ♜g5+ ♖h8 25. ♖f7 ♖b5 26. h4 ♗e8 27. ♗xe8+ ♖xe8 28. ♖xa7 b5 29. ♖c5±) 24. ♜d8+ ♖h8 25. ♖e7. Black resigned in view of 25... ♖g8 26. ♜e6+-.

Nº4

By 20. ♜xf7!, although 20. ♜xd5 ♙xd5 21. ♖h4 is also good. There can follow 20... ♖xf7 21. ♜e4 ♖b6 (21... ♖d7 22. ♙xf6 ♙xf6 23. ♖xh7 ♙g7 24. ♜g5 ♖f6 25. ♗xc8 ♙xc8 26. ♖h4 ♗h8 27. ♖g4±) 22. ♙xf6 ♙xf6 (22... ♜xf6 23. ♜g5 ♖g7 24. ♜xe6 ♖h8 25. ♖h6±) 23. ♗xc8 ♙xc8 (23... ♗xc8 24. ♖xh7 ♖f8 25. ♙xd5 exd5 26. ♜xf6+-) 24. ♙xd5 exd5 25. ♜g5! ♙xg5 (25... ♖f8 26. ♖h6+-) 26. ♖xh7 ♖f6 27. ♗xe8. Black resigned.